

FDR Clinica

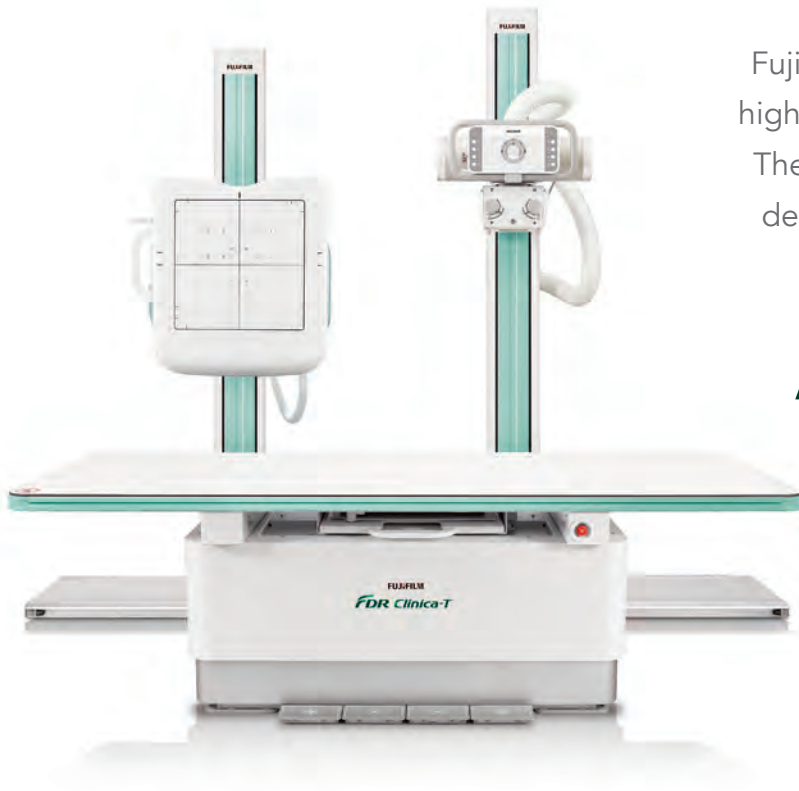
SERIES OF COMPONENTS



Clinical Confidence

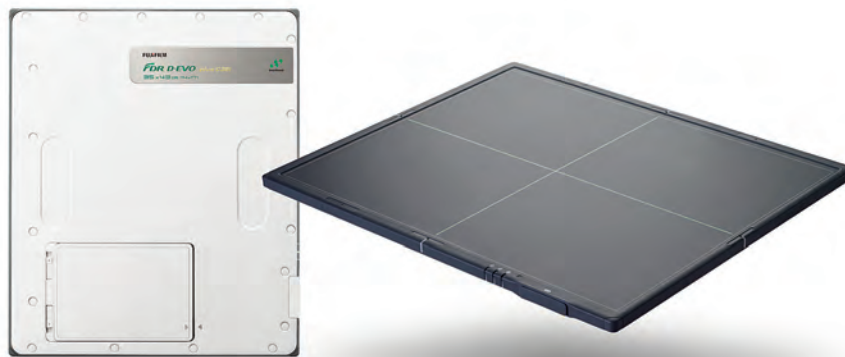
Fujifilm is proud to announce our latest high-quality, cost-effective x-ray solution. The FDR Clinica Series of Components deliver a user-friendly, **smart** workflow for busy imaging professionals.

FDR Clinica
SERIES OF COMPONENTS



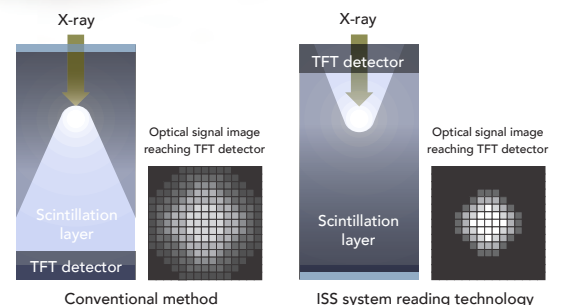
Precision

When your focus is on reducing dose and obtaining excellent image quality, FDR D-EVO is for you.



Patented ISS capture technology promotes high sensitivity

The FDR Clinica Series of Components is intended for use with FDR D-EVO detectors featuring Fujifilm's proprietary Irradiated Side Sampling (ISS) technology, which positions its capture electronics (TFTs) at the irradiation side, in contrast to traditional detectors. This design significantly suppresses scattering and attenuation of X-ray signals, improving efficiency to produce sharper images at lower doses compared to traditional designs.*



*Based on higher MTF and DQE demonstrated in Sato K, et al., Effect of X-ray incident direction and scintillator layer design on image quality of indirect conversion flat-panel detector with GOS phosphor.

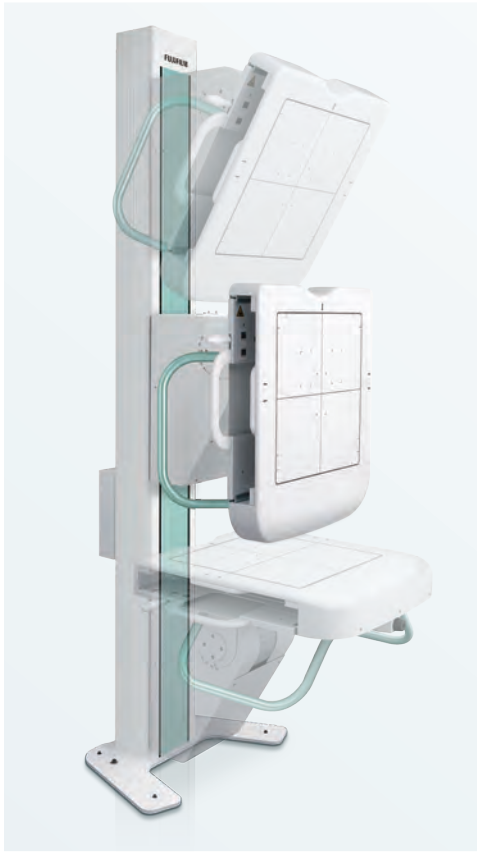
Optimal Efficiency



The FDR Clinica Series of Components has all the advanced features you need to enhance workflow and improve the patient experience.

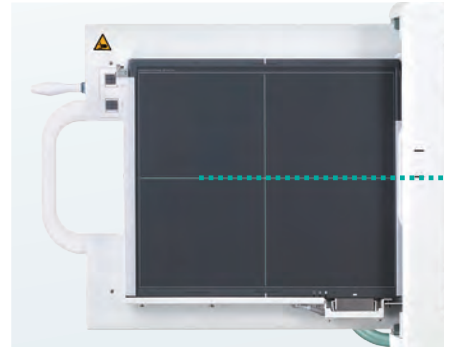
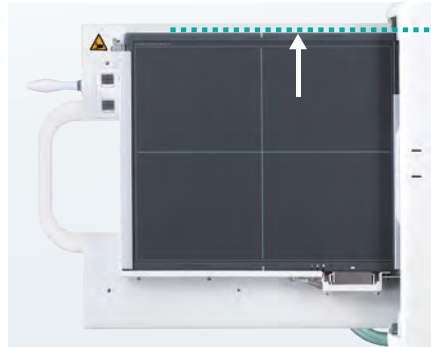
Utility

New features improve workflow and patient experience.



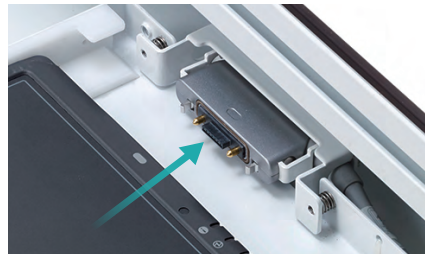
1 Tilting Wall Stand

A wide variety of exams can be performed using the optional tilting wall stand. Nonambulatory patients can be easily imaged in the seated position.



2 Dual-reference Rotation

Both top- and center-reference rotation are available in our rotating tray, with automatic connection to the detector. The detector can be rotated while mounted in the tray with no need to remove and remount, greatly reducing handling.



3 Automatic Connection

The detector cable and connector are built into the tray, enabling the detectors to be automatically connected when set in the tray. This new function greatly improves efficiency and provides a clean look with no need to manage cabling. The automatic connection to the detector keeps the battery charged in the event that wireless operation is required.

Advanced image processing: Dynamic Visualization



Conventional image



New image



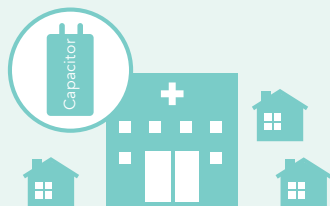
Customized image

Fujifilm's renowned digital image processing expertise, including Dynamic Visualization, optimizes image display based on recognition of contrast levels throughout the entire exposure field. The resulting first-up images have outstanding detail and greater window and leveling capability in PACS.

Versatility

The FDR Clinica Series of Components provide flexibility, with a wide selection of power ratings to meet your requirements.

■ Outpatient Center



Capacitor Assisted Generator

Perfect for the medium-sized x-ray department.
No power supply modification necessary.
40kW Single Phase Input power 3kW.

■ Hospital



Line Powered Generator

Can handle the rigorous workload of a large facility with Three Phase Input power and several power ratings from which to choose: 40, 52, or 68 kW.

FDR Clinica Series of Components Specifications

FDR Clinica GXR Series of Components				
X-RAY GENERATOR				
	Capacitor Type	Line-power Type		
Product Name	GXR-C40	GXR-40	GXR-52	GXR-68
Output Rating	40 kW	40 kW	52 kW	68 kW
Line Nominal, Phase	110/120VAC, 230VAC, 1Φ	230VAC, 1Φ 400VAC, 480VAC, 3Φ	400VAC, 480VAC, 3Φ	
Line Voltage Range	±10% (Frequency: 50/60Hz)			
kV Range	40-150kV, 1kV step			
mA Range	10 to 500mA	10 to 500mA	10 to 640mA	10 to 800mA
Timer Range	0.001 to 10 sec, 38 steps			
mAs Range	0.1 to 500mAs			
Max. Power Output	500mA@80kV 400mA@100kV 320mA@125kV	500mA@80kV 400mA@100kV 320mA@125kV	640mA@81kV 500mA@104kV 400mA@130kV 320mA@150kV	800mA@85kV 640mA@106kV 500mA@136kV 400mA@150kV
Minimum Breaker Rating	15A (230VAC, 1Φ) 30A (110VAC, 3Φ)	100A (230VAC, 1Φ) 65A (400VAC, 3Φ) 50A (480VAC, 3Φ)	75A (400VAC, 3Φ) 65A (480VAC, 3Φ)	90A (400VAC, 3Φ) 75A (480VAC, 3Φ)
Anatomical Programs	User-programmable max. 1,280 programs with APR utility software			
Technique Selection	4 point display (kV, mA, Time, mAs)			
X-RAY TUBE				
Focal Spot Size	0.6/1.5 mm		0.6/1.2 mm	
Max. Anode HU	200kHU		300kHU	
Target Angle	14°		12°	
COLLIMATOR				
Field Shape	Rectangular			
Max. Field Size	More than 17x 17 in at 100cm SID			
Inherent Filtration	Min. 2.0mmAl eq.			
Luminosity	Over 160LUX at 100cm SID (Typ. 250LUX)			
Light Source	Single LED			
Standard	Laser line, Tape measure, Rotating flange			



Continued on the following page.

Continued from the previous page.

		Patient Table		
		4-way Floating Tabletop	6-way Elevating Table	
Movement	Tabletop	Longitudinal	39 (±20) in	
		Transversal	10 (±5) in	
	Vertical	Travel	11 (22-33) in	
		Speed	17 mm/sec	
		Operating	Motorized movement by footswitch DC-motor (Linear Actuator)	
Bucky	Longitudinal	14 in with standard tray		
Tabletop	Inherent Filtration	1.2 mmAl at 100kV		
	Max. Patient Weight	660 lbs (300 kg)		
	Size	87 (W) x 30 (D) x 2 (H) in	87 (W) x 32 (D) x 2 (H) in	
Bucky Type/Grid	Fixed	FD 100 cm, 103ipi, ratio 10:1		
Lock (Brake)		EM Lock, beam sensor on/off	EM Lock, Foot Switch on/off	
Center Indication		Buzzer sound and LED	Transverse center, height center	
Dimension/Weight		87 (W) x 30 (D) x 26 (H) in 330 lbs (150 kg)	87 (W) x 32 (D) x 33 (H) in 573 lbs (260 kg)	

Vertical Wall Stand	
Cassette Stroke	Vertical 65 in (17-81 in from floor to Bucky center)
Bucky Type/Grid	Fixed FD 150 cm, 103ipi, ratio 10:1
Lock (Brake)	EM Lock, Switch on/off
Balance	Counter Weight
Dimension/Weight	Max. 85 (H) x 26 (W) x 16 (D) in / 264 lbs (120 kg)

Floor-mounted Tube Stand		
Tube Rotation Angle	±135°	
Tube Stroke	Longitudinal	Max. 87 in
	Lateral	7 in
	Vertical	62 in (17-80 in from floor to focus)
Lock (Brake)	EM Lock, Foot Switch on/off	
Balance	Counter Weight	
Column Rotation	90° step	
Dimension/Weight	91 (H) x 54 (D) x 118 (W) in / 529 lbs (240 kg)	

DR-ID 600  0123

FDR D-EVO for Digital Radiography

(DR-ID 600, including DR-ID 300CL)
 FDR D-EVO G35i and C35i are available for the
 FDR Clinica Series of Components.
 For details, please refer to the FDR D-EVO Series brochures.

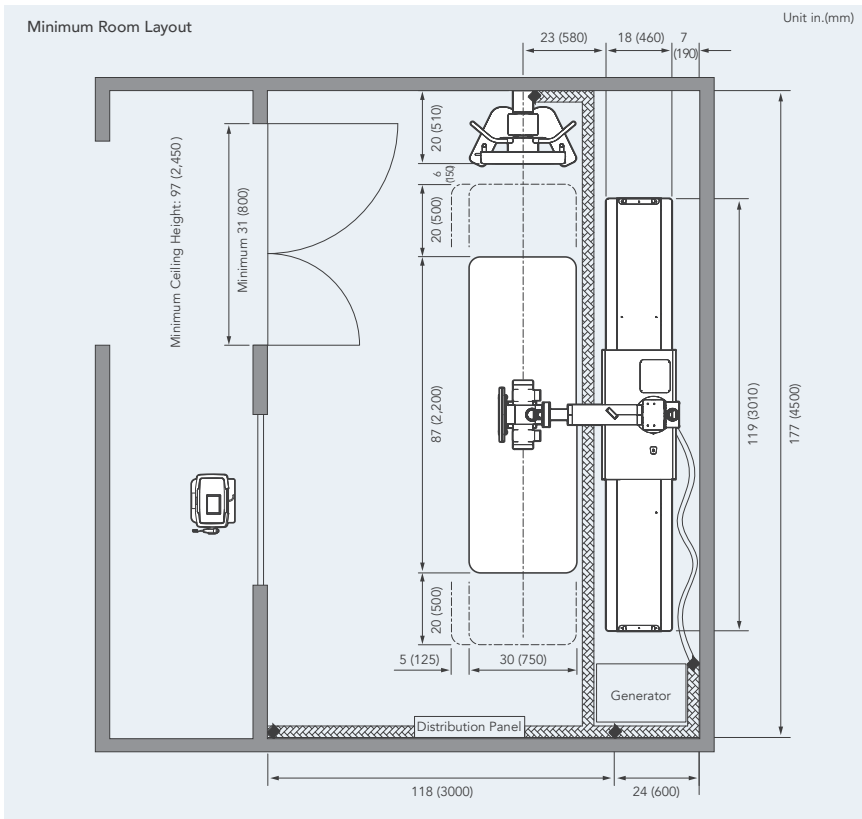


FDR D-EVO C35i



FDR D-EVO G35i

Dimensions



Specifications are subject to change without notice.